

Austin Slab

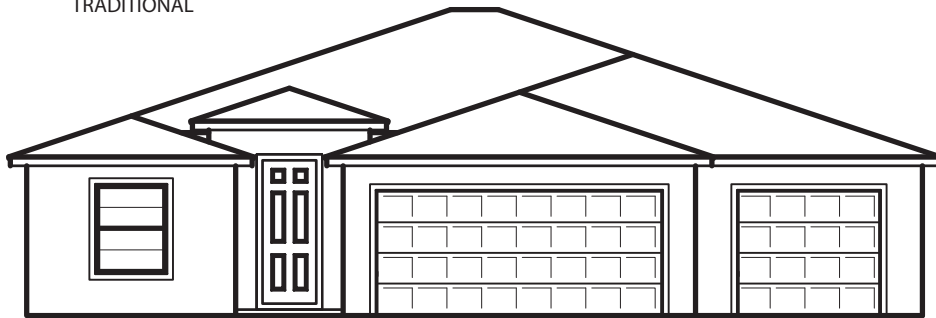


4 Bedroom, 2 Bathroom, 3 Car Garage
1869 Sq.F.t

Girard Homes



TRADITIONAL



CONTEMPORARY



FARM HOUSE

© 2021 Girard Homes LLC

573.326.4034
www.GirardLuxuryHomes.com

Subject to Architectural Approval of Community. Subject to change without notice

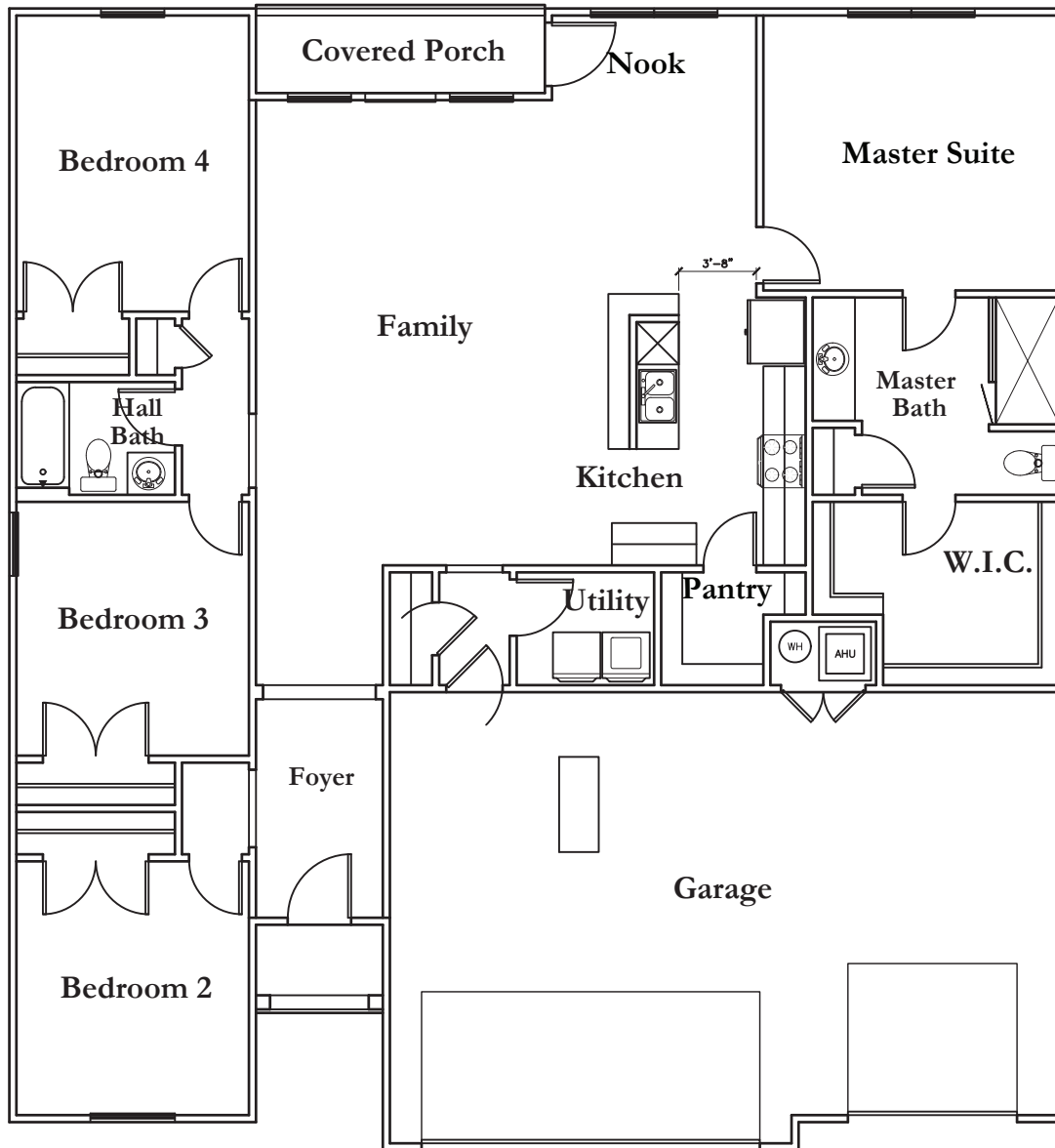


Austin Slab



4 Bedroom, 2 Bathroom, 3 Car Garage
1869 Sq.F.t

Girard Homes



© 2021 Girard Homes LLC

573.326.4034
www.GirardLuxuryHomes.com

Subject to Architectural Approval of Community. Subject to change without notice

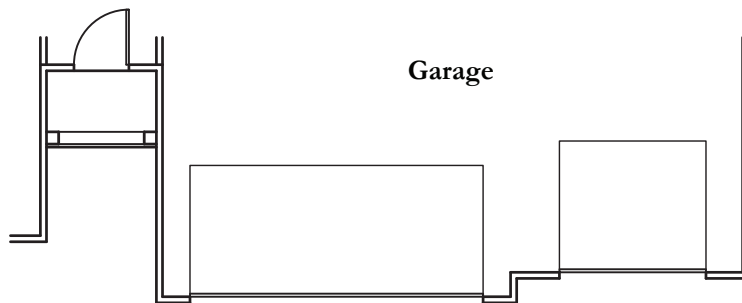
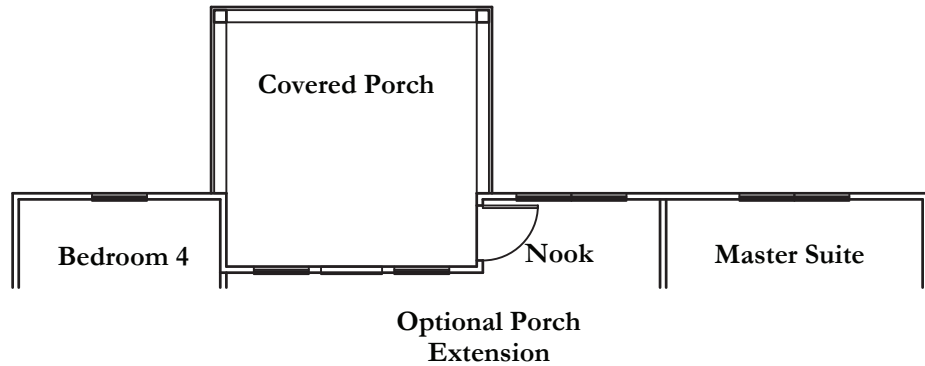
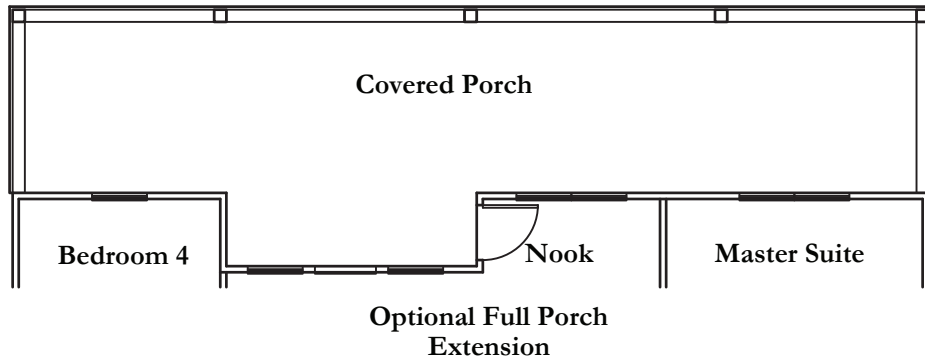


Austin Slab



4 Bedroom, 2 Bathroom, 3 Car Garage
1869 Sq.F.t

Girard Homes



© 2021 Girard Homes LLC

Optional 2'-0" Garage
Extension
(+65 SqFt at Garage)

573.326.4034

www.GirardLuxuryHomes.com

Subject to Architectural Approval of Community. Subject to change without notice

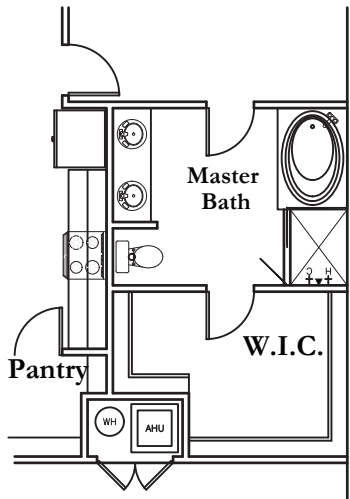


Austin Slab

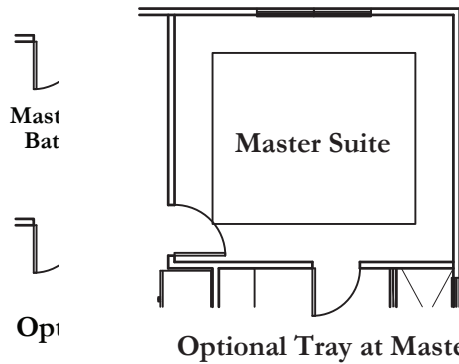


4 Bedroom, 2 Bathroom, 3 Car Garage
1869 Sq.F.t

Girard Homes

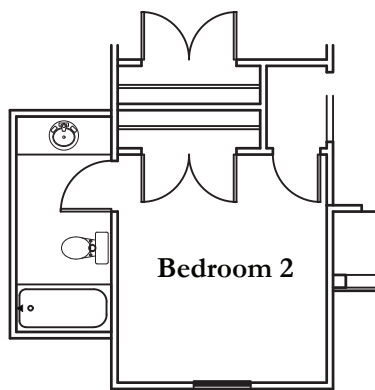


Optional Master Bath Deluxe

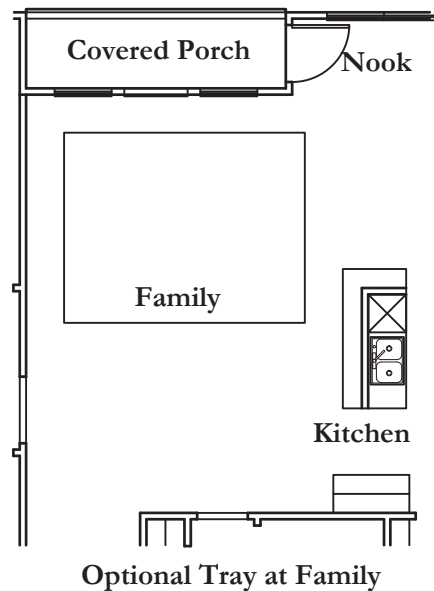


Optional Tray at Master

© 2021 Girard Homes LLC



Optional Ensuite Bath
at Bedroom 2
(+65 SqFt Living)



Optional Tray at Family

573.326.4034
www.GirardLuxuryHomes.com

Subject to Architectural Approval of Community. Subject to change without notice



Austin Slab



4 Bedroom, 2 Bathroom, 3 Car Garage
1869 Sq.F.t

Girard Homes



Master
Bath

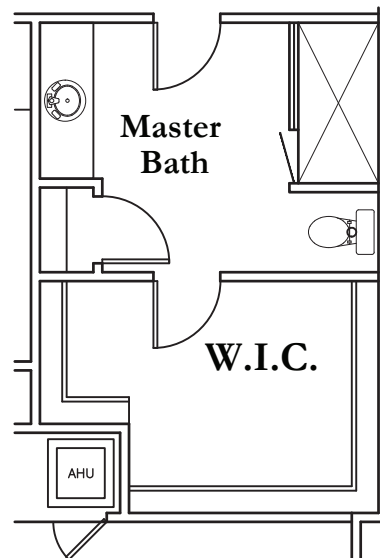
Optional Window at
Master Bath



Bedroom 3

Optional 1'-0"
Stretch at Hall Bath

© 2021 Girard Homes LLC



Master
Bath

W.I.C.

Optional 1'-0"
Stretch at Master
Bath

573.326.4034

www.GirardLuxuryHomes.com

Subject to Architectural Approval of Community. Subject to change without notice

